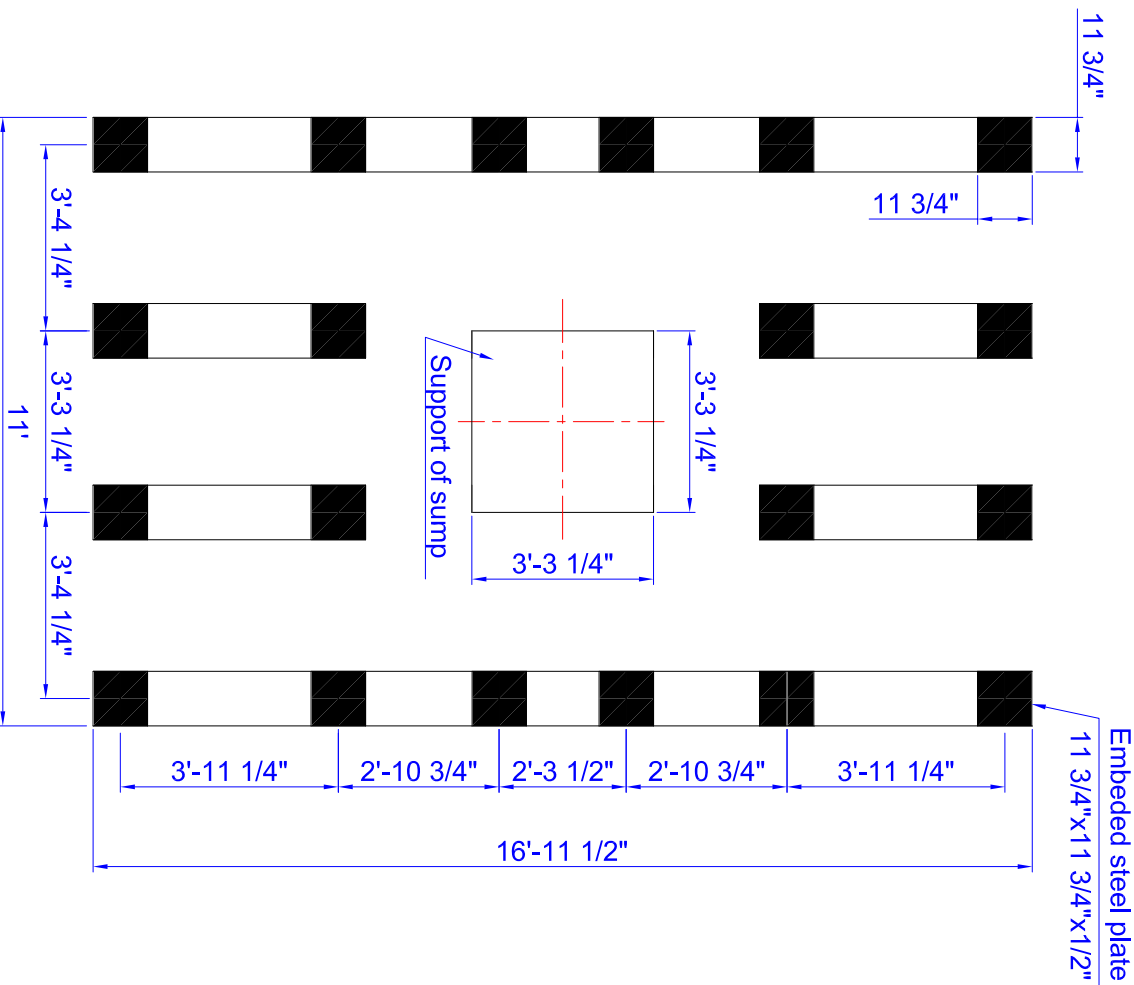


The height of the foundation should be set according to the water outlet pipe diameter.



**Remark:**

- 1、 The foundation and the support of center sump are at the same level.
- 2、 The height deviation should be less than 1/4".
- 3、 Final foundation design must be determined considering the pump's NPSHR



PROJECT MODEL

**MXR-KM-E2-15  
FOUNDATION**

TITLE

**MESAN COOLING TOWER**

DRAWN BY Xln DESIGNED BY Xln CHECKED BY Alice APPROVED BY Isa

SCALE FILE NAME DATE

2012-05-03

DRAWING NO. REVISION

01

