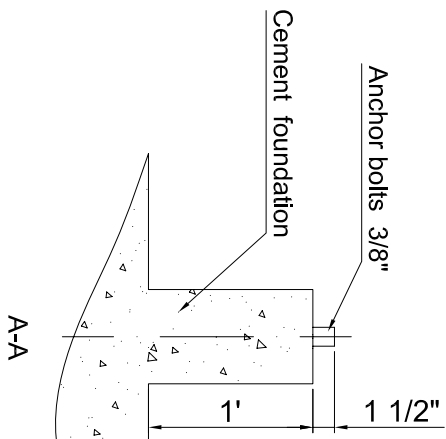


MIWO



The height of the foundation should be set according to the water outlet pipe diameter.

- Remark:
- 1、 The foundation and the support of center sump are at the same level.
 - 2、 The height deviation should be less than 1/4".
 - 3、 Final foundation design must be determined considering the pump's NPSHR.
 - 4、 The operating weight is 1664lbs.



PROJECT/MODEL
MKT-40
FOUNDATION

TITLE
MESAN COOLING TOWER

| | | | |
|----------|-------------|------------|-------------|
| DRAWN BY | DESIGNED BY | CHECKED BY | APPROVED BY |
| xin | xin | Alice | Isa |
| SCALE | FILE NAME | DATE | |
| | | 2012-05-03 | |
| | DRAWING NO. | REVISION | |
| | | 01 | |