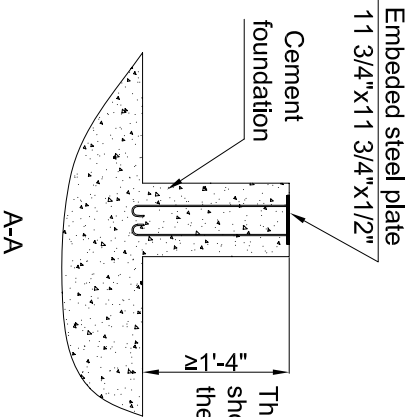


Embedded steel plate
10" x 10" x 1/2"



The height of the foundation should be set according to the water outlet pipe diameter.

Remark:

- 1、 The foundation and the support of center sump are at the same level.
- 2、 The height deviation should be less than 1/4" .
- 3、 Final foundation design must be determined considering the pump's NPSHR.
- 4、 The operating weight is 48325 lbs. °



PROJECT / MODEL
**MKT-1000
FOUNDATION**

TITLE
MESAN COOLING TOWER

DRAWN BY	DESIGNED BY	CHECKED BY	APPROVED BY
xin	xin	Alice	Isa
SCALE	FILE NAME	DATE	
		2012-05-03	
	DRAWING NO.	REVISION	
		01	