

**NEW**

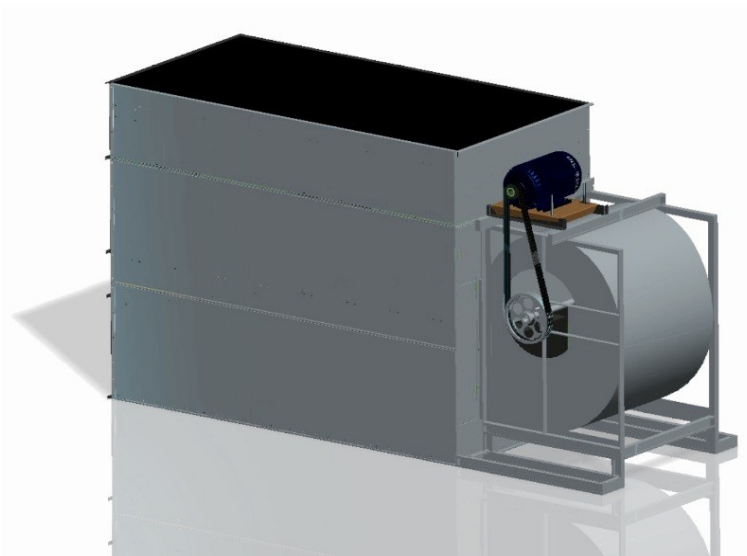


# MFD Series

Forced-Draft Counter-Flow

## Product Features

- First Forced-draft cooling tower in MESAN USA's product line up
- CTI - certified
- ASHRAE-90.1-2013 compliant
- 15 models, ranging from 55 to 200 tons (\*at 95°/85°/78°F WB) per cell
- Low profile, low noise and compact footprint
- AMCA-certified, heavy-duty, forward-curved, centrifugal fans
- Available in 3 different materials of construction: HDGS, SS-304 and SS316.
- Some models can be factory pre-assembled and shipped in standard containers
- Industrial grade design and construction for longest service life



**ISO  
9001  
QUALITY  
ASSURANCE**

