

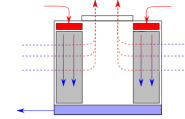


Trust MESAN with  
your evaporative cooling needs

All products catalog

For almost half a century the MESAN Group has become an industry leader in designing and manufacturing evaporative cooling equipment. MESAN products are designed with excellence always in mind. Thermal performance; energy efficiency, environmental consciousness and cost effectiveness are the goals of our research and development engineers, as well as our Management and staff. MESAN is an ISO-9001-2008 certified company and our CTI certified products are ASHRAE-90.1-2010 compliant. All this confirms MESAN's constant pursuit of excellence and world-class quality.

## Counterflow Induced Draft

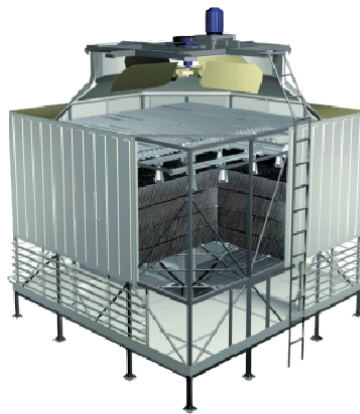


MCC



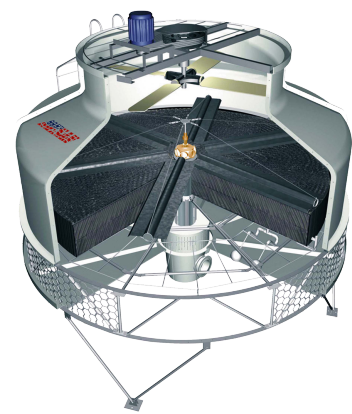
- 240-2,523 gpm capacity.
- FRP, SS304/316 and HDGS construction is available.
- Containerized for lowest shipping cost with easiest and quickest field assembly.
- Can be factory assembled.

MST-2000



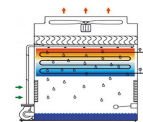
- 352-4,400 gpm capacity.
- Smaller footprint.
- Can be factory assembled.
- Low Energy Consumption.

MKT



- 26-4,400 gpm capacity.
- Brass sprinkler heads.
- Best value (dollars per ton).
- Low Drift Model is available.

## Closed Circuit Induced Draft

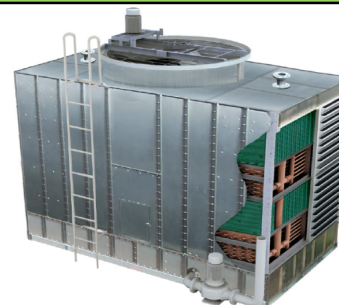


MXC



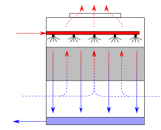
- 200-1,012 gpm capacity.
- Stainless steel coils.
- Can be shipped in pre-assembled modules.

MST-7000



- 233-1,200 gpm capacity.
- Copper or Stainless Steel coils.
- Can be shipped in pre-assembled modules.

# Crossflow Induced Draft



**MXR-KM**



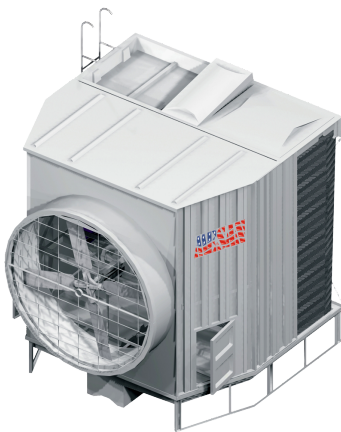
**MXL**



- 260-5,000 gpm capacity.
- FRP, SS304/316 and HDGS construction is available.
- 214 certified models.
- Self-balancing bottom inlet piping on models A1 to E3 to save on piping costs and installation time.

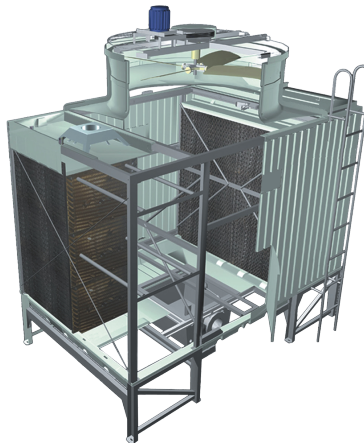
- 560-2,200 gpm capacity.
- Low profile, designed for the urban environment.
- FRP, SS304/316 and HDGS construction is available.
- Improved resistance against high winds and seismic forces.
- MXL-IBC is rated for up to 160 mph winds (hurricane resistant).

**MST-1000**



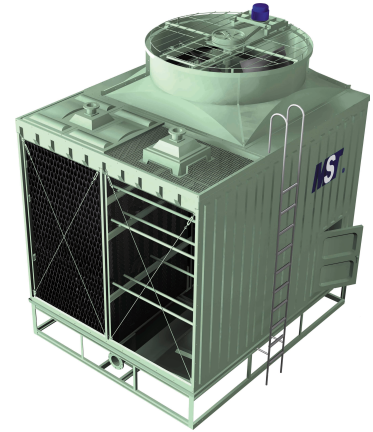
- 26-1,100 gpm capacity.
- Single air inlet with horizontal discharge.

**MST-5000**



- 350-4,400 gpm capacity.
- Low electrical consumption.
- Easy maintenance.

**MST-3000**



- 350-2,000 gpm capacity.
- Single air inlet with top discharge.
- Space saving.

Note:

1. Nominal flow rates are at 95°F/85°F/78°F WB.



[www.mesanusa.com](http://www.mesanusa.com)

e-mail: [sales@mesanusa.com](mailto:sales@mesanusa.com)

- Specification & Design are subject to change without notice.
- All rights reserved.

2012-12-HL